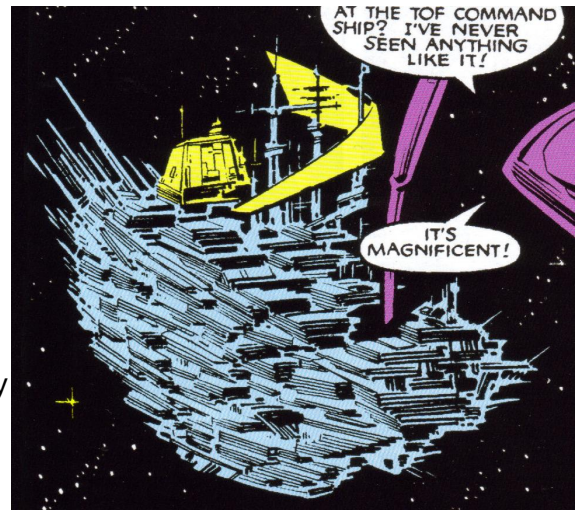


Name: Wayfarer  
 Type: Tof Capital Ship  
 Scale: Capital  
 Length: 1,800 meters  
 Skill: Capital Ship Piloting: Tof Capital Ship  
 Crew: 25,315, skeleton 5000/ +20  
 Passengers/Troops: 15,000  
 Crew Skill: Capital Ship Piloting 5D+1, Capital Ship Gunnery 4D+2, Capital Ship Shields 4D+1  
 Consumables: 4 Years  
 Cargo Capacity: 58,000 Tons  
 Hyperdrive Multiplier: X2  
 Hyperdrive Backup: X12  
 Nav Computer: Yes  
 Space: 5  
 Maneuverability: 1D  
 Hull: 7D  
 Shields: 4D  
 Sensors:  
     Passive: 50/1D  
     Scan: 100/3D  
     Search: 200/4D  
     Focus: 6/4D+2  
 Complement:  
     Tof Starfighters

Weapons:

40 Medium Laser Cannon Turrets  
     Scale: StarFighter  
     Fire Arc: 5 Front, 15 Left, 15 Right, 5 Back  
     Fire Control: 2D  
     Space: 1-3/12/25  
     Atmosphere Range: 100-300/1.2/2.5km  
     Damage: 4D  
 80 TurboLaser Batteries  
     Scale: Capital  
     Fire Arc: 10 Front, 30 Left, 30 Right, 10 Back  
     Fire Control: 3D  
     Space: 3-15/36/75



Atmosphere Range: 6-30/36/150km

Damage: 5D

80 Ion Cannons

Scale: Capital

Fire Arc: 10 Front, 30 Left, 30 Right, 10 Back

Fire Control: 1D+2

Space: 1-10/25/50

Atmosphere Range: 2-20/50/100km

Damage: 3D

10 Tractor beam projectors

Scale: Capital

Fire Arc: 4 Front, 2 Left, 2 Right, 2 Back

Fire Control: 2D

Space: 1-5/15/30

Atmosphere Range: 2-10/30/60km

Damage: 6D

Description: The Wayfarer was a large boat-shaped star cruiser, commanded by Tof forces led by an unidentified Supreme in the Battle of Zeltros in 4 ABY.

The design of the Wayfarer was reminiscent of earlier styles, such as the Fairwind. It seemed to be of the same design as its fellow Tof warship, the Merriweather, though there were minor differences.

Luke Skywalker and a team of Hoojibs and Hiromi infiltrated the Wayfarer during the Battle of Zeltros to rescue the Zeltron aides Bahb, Jahn, Marruc and Rahuhl, that the Tofs had mistaken for important Alliance commanders. The rescue was successful and cemented the Zeltron commitment to the Alliance. Before escaping the vessel, Skywalker planted explosives in key areas of the vessel, leading to its eventual destruction.

---

Stats by FreddyB, descriptive text from WookieePedia

Image copyright LucasArts.

Any complaints, writs for copyright abuse, etc should be addressed to the Webmaster [FreddyB](#).