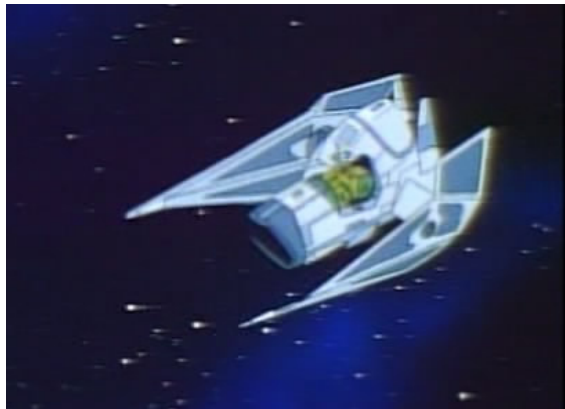


Starships D6 / IG-1000

Name: IG-1000
Type: Modified TIE variant
Scale: Starfighter
Length: 9.24 meters
Skill: Starfighter Piloting - TIE
Crew: 1
Consumables: 2 Days
Cargo Capacity: 75 Kg
Hyperdrive Multiplier: No
Hyperdrive Backup: No
Nav Computer: No
Space: 9
Atmosphere: 375; 1125kmh
Maneuverability: 2D
Hull: 2D+2
Sensors:
 Passive: 20/0D
 Scan: 40/1D
 Search: 60/2D
 Focus: 3/3D



Weapons:

2x Laser cannons(Fire Linked)
 Fire Arc: Front
 Fire Control: 2D
 Space: 1-3/12/25
 Atmosphere Range: 100-300/1.2/2.5km
 Damage: 5D

Description: IG-1000 was a modified TIE variant starfighter piloted by the assassin droid IG-88.

The IG-1000 was modified TIE variant. It was armed with two laser cannons that fired red laser bolts. The ship's cockpit was square with open angular windows, unlike the cockpit-windows on regular TIE-series fighters and transports. The solar gathering panels carried the cannons, similar to the panels on the TIE/IN interceptor. The ship had one thruster which glowed with a yellow light, unlike the colorless exhaust on most TIE models.

The droid bounty hunter used the IG-1000 in the year 15 BBY. IG-88 flew the ship during his assignment from Ko Zatec-Cha to recover Mon Julpa and the Tammuz-an Royal Scepter. In order to capture Julpa and the Scepter, IG-88 saved the lives of Julpa, his assistant Sollag Den, Jessica Meade, Jann Tosh, R2-D2 and C-3PO. When their ship was attacked by Gir Kybo Ren-Cha, the droid fired on Ren-Cha's attack ship, the Dianoga, and routed the pirates.

Stats by FreddyB, Descriptive Text from WookieePedia

Image copyright LucasArts

Any complaints, writs for copyright abuse, etc should be addressed to the Webmaster [FreddyB](#).