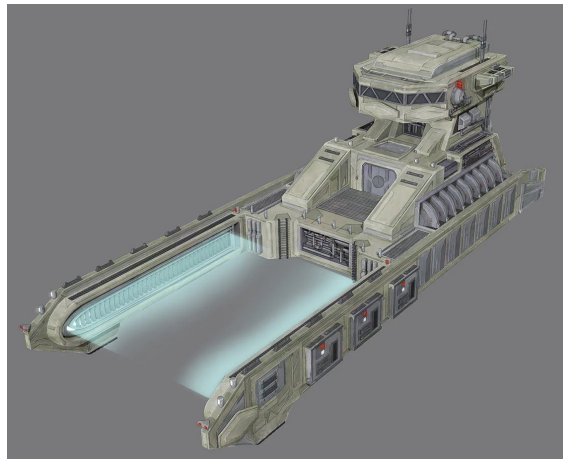


## Starships D6 / Clone Impound Vessel

Name: Clone Impound Vessel  
Scale: Starfighter  
Length: 58m  
Skill: Space Transports - Clone Impound Vessel  
Crew: 2  
Crew Skill: varies  
Passengers: 12  
Consumables: 1 Month  
Cargo Capacity: 100 Tons  
Hyperdrive Multiplier: x4  
Hyperdrive Backup: no  
Nav Computer: Yes  
Space: 4  
Atmosphere: 450;800kmh  
Maneuverability: 1D  
Hull: 4D  
Sensors:  
    Passive: 20/0D  
    Scan: 40/1D  
    Search: 60/2D  
    Focus: 2/3D  
Weapons:  
    Tractor Beam Projector (2)  
        Fire Arc: Front  
        Scale: Capital  
        Skill: Starship Gunnery  
        Fire Control: 2D  
        Space Range: 1-8/15/20  
        Atmosphere Range: 100-800/1.5km/2 km  
        Damage: 5D



Description: The clone impound vessel, also known as the tow truck, was a type of starship utilized by the clone troopers of the newly-formed Galactic Empire. The vessel featured two frontward-facing arms that could be used to seize starships. The clone impound vessel was utilized on the planet Saleucami, where starshipsâ€”including civilian vesselsâ€”were seized and taken to an impound lot at the spaceport

---

Stats by FreddyB, Descriptive Text from WookieePedia.

Image copyright LucasArts.

Any complaints, writs for copyright abuse, etc should be addressed to the Webmaster [FreddyB](#).