

## Starships D6 / Corellian Engineering Corporation Imperial Cargo Shuttle

Name: Corellian Engineering Corporation Imperial Cargo Shuttle

Scale: Capital

Length: 115 Meters

Skill: Space Transports: Corellian Engineering Corporation Imperial Cargo Shuttle

Crew: 10, Skeleton Crew: 5/+10

Crew Skill: Astrogation 4D+1, Space Transports 5D+2, Capital Ship Shields 4D+1, Sensors 5D

Passengers: 20

Cargo Capacity: 2500 Tons

Consumables: 3 Months

Cost: 400,000 (used)

Hyperdrive Multiplier: X2

Hyperdrive Backup: X12

Nav Computer: Yes

Maneuverability: 1D

Space: 5

Atmosphere: 300, 900kmh

Hull: 3D

Shields: 1D

Sensors:

Passive: 40/1D

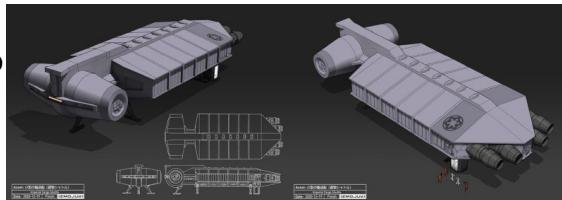
Scan: 80/2D

Search: 100/3D

Focus: 4/4D

Weapons:

Description: The Imperial Cargo Shuttle was a class of shuttle that was used by the Galactic Empire and the YasaburÅ• clan on the planet Tao. YasaburÅ• used one such shuttle to travel to an Imperial-class Star Destroyer and confront his daughter, OchÅ•, who had left the clan for the Empire.



---

Stats by FreddyB, Descriptive Text from WookieePedia.

Image copyright LucasArts.

Any complaints, writs for copyright abuse, etc should be addressed to the Webmaster [FreddyB](#).