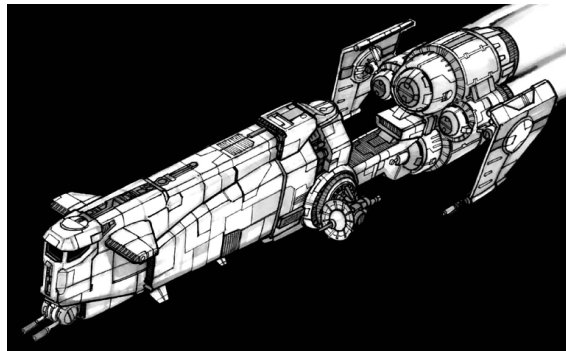


Starships D6 / Corellian Engineering C

YV-330 LIGHT FREIGHTER

* See below for more information.



Craft: Corellian Engineering Corporation YV-330

Type: Stock Light Freighter

Scale: Starfighter

Dimensions:

-Length: 26m

Skill: Space Transports

Crew: 4

-Gunners: 1

-Skeleton: 1/+5

Crew Skill: Per players' skills

Passengers: 6

Cargo Capacity: 70 metric tons

Consumables: 1 month

Cost: 300,000 credits (new); 100,000 (used)

Hyperdrive: x2 (Backup: x12)

Nav Computer: Yes

Maneuverability: 2D

Speed:

-Space: 4

-Atmosphere: 280; 800kmh

Hull: 5D

Defenses:

-Shields: 1D

Sensors:

-Passive: 15/0D

-Scan: 30/1D

-Search: 45/2D

-Focus: 2/3D+2

WEAPONS:

2 Heavy Laser Cannons (Fire-Linked)

Location: Front Under Cockpit

Fire Arc: Turret

Crew: 1

Skill: Starship Gunnery

Scale: Starfighter

Fire Control: 2D

Range:

-Space: 1-3/12/25

-Atmosphere: 100-300/1.2/2.5km

Damage: 5D

Rate Of Fire: 1

DESCRIPTION:

The YV-330 was a light freighter ship produced by the Corellian Engineering Corporation. It was 26 meters long, and its standard armament was a twin laser cannon turret mounted beneath the cockpit. YV-330 freighters were often used by smugglers, and modified with heavier weaponry.

The YV-330 was usually used by the Corellian Security Forces for patrol and customs operations, and the ship was truly more than a match for smugglers and pirates. The ship's main hull was separated in an engine and crew section which was rather small and didn't leave much space for passengers or even cargo. Most of the space was needed for the crew quarters and gun wells, of which the ship had plenty (when modified to have them).

While thinner and smaller than many light freighters, the YV-330 still had enough cargo space to make a living off of, and was preferred by ship owners who enjoyed their privacy with few people around.

GAME DESIGN NOTES:

Reverse engineered from The Emerald Lance to make a stock YV-330 Light Freighter:

-4 Concussion Missiles removed (3 metric tons each (12 total), +1/2 (6) for being concealed, 18 metric tons total).

-Autoblaster removed (0.5 metric tons, x2 for being concealed, 1 metric ton total)

-4 Light Ion Canons removed (0.5 metric tons each (2 total), +1/2 for being concealed, 3 metric tons total).

-Shields downgraded from 3D to 1D (-4 metric tons).

-Hull downgraded -1D (-5 metric tons).

-Engines downgraded from Corellian Evader-GT Ion Engines (Space Speed 8) to Space Speed 4 (-4 metric tons).

- Hyperdrive downgraded from x1 to x2 (-3 metric tons).
 - Enhanced Sensor Package downgraded (-5 metric tons).
 - Removed 2 Crew (+20 metric tons).
 - +2 metric tons to round things out nicely (Total = 70 metric tons).
-

Stats by FreddyB, Descriptive Text from WookieePedia.

Image copyright LucasArts.

Any complaints, writs for copyright abuse, etc should be addressed to the Webmaster [FreddyB](#).