

Starships D6 / Republic Fleet Systems

Name: Republic Fleet Systems Foray-class Blockade Runner

Type: Frigate / Capital ship

Scale: Capital

Length: 155 meters

Skill: Capital Ship Piloting: Foray-class

Crew: 40 to 100; Skeleton Crew: 3/+10

Crew Skill: Astrogation 4D, Capital Ship Piloting 5D+1, Capital

Ship Shields 4D+2, Capital Ship Gunnery 5D+1, Sensors 4D

Passengers: 300

Cargo Capacity: 2,800 Tons

Consumables: 9 Months

Cost: 3,000,000 credits (estimated)

Hyperdrive Multiplier: X2

Hyperdrive Backup: X12

Nav Computer: Yes

Maneuverability: 1D

Space: 5

Atmosphere: 350, 950kmh

Hull: 3D

Shields: 1D

Sensors:

Passive: 20/0D

Scan: 40/1D

Search: 80/2D

Focus: 2/3D

Weapons:

Dual Turbolaser Turrets (2)

Scale: Capital

Fire Arc: Turret

Fire Control: 2D

Space: 2-10/24/60

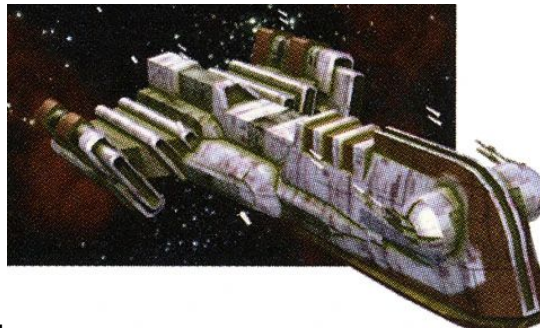
Atmosphere: 4-20/48/120 Km

Damage: 4D

Anti-starfighter medium laser cannons (2)

Scale: Starfighter

Fire Arc: Turret



Fire Control: 3D

Space: 1-2/10/20

Atmosphere: 1-2/10/20 Km

Damage: 4D

Description: Foray-class blockade runners were capital ships used by the Republic Navy during the Mandalorian Wars (c. 3964 BBY), the Jedi Civil War, and afterwards.

Characteristics

Like the Corellian Engineering Corporation warships of the Republic's later years, these vessels had long, slender hulls capped at the stern with large thrusters.

The blockade runners were armed with turreted guns positioned on each side of the ship's bow and point-defense guns lining the main superstructure. The command area was located on the ventral side of the ship.

History

The Foray-class's original purpose was to safeguard the Republic Navy's reach by being mass-produced to the point of filling up the trade routes, but the ship gained new mission uses during the Mandalorian Wars. It assisted Republic troops and civilians caught behind enemy lines, and aided besieged Republic worlds by supplying them while under fire. The ships could also be used to secretly land commandos.

The Foray-class was one of the two main capital ship classes upon which the Republic fleet depended—along with the Hammerhead-class cruiser—after most of the larger warships were stolen by fallen Jedi, Darth Revan and Darth Malak, shortly after the Battle of Malachor V.

Many ships of this class were also used to defend Citadel Station, in orbit around Telos IV, against a Sith attack led by Darth Nihilus and the Ravager.

Stats by FreddyB, Descriptive Text from WookieePedia.

Image copyright LucasArts.

Any complaints, writs for copyright abuse, etc should be addressed to the Webmaster [FreddyB](#).