

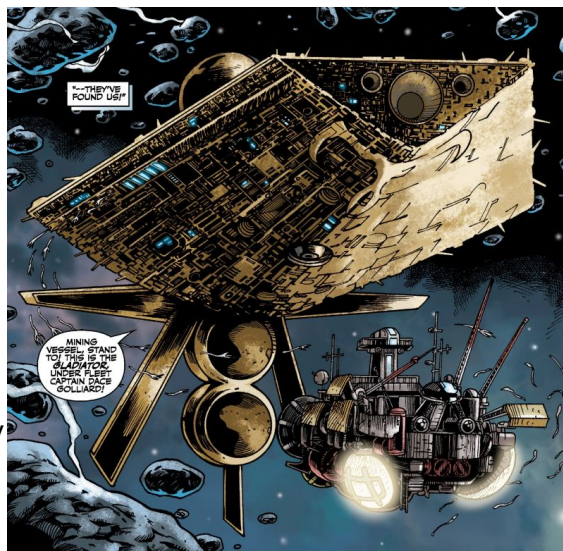
Starships D6 / Gladiator (Crucible Cap)

Name: Gladiator
Type: Battleship
Scale: Capital
Length: 500+ Meters
Skill: Capital Ship Piloting: Gladiator
Crew: 755 ; skeleton 492/+12
Passengers/Troops: 400
Slaves/Prisoners: 800
Crew Skill: Capital Ship Piloting 5D+1, Capital Ship Gunnery 4D+2, Capital Ship Shields 4D+1
Consumables: 1 Year
Cargo Capacity: 1,500 Tons
Hyperdrive Multiplier: X2
Hyperdrive Backup: X12
Nav Computer: Yes
Space: 4
Maneuverability: 1D
Hull: 4D
Shields: 3D
Sensors:
 Passive: 50/1D
 Scan: 100/3D
 Search: 200/4D
 Focus: 4/4D+2

Drones: 40
Transports: 2

Weapons:

4 x Point Defence Laser Cannon Batteries
Scale: StarFighter
Fire Arc: 1 Front/Left, 1 Front/Right, 2 Front
Fire Control: 2D
Space: 1-5/15/25
Atmosphere Range: 100-500/1.5/2.5km
Damage: 4D



7 x Dual Light TurboLaser Batteries

Scale: Capital

Fire Arc: 2 Front/Left, 2 Front/Right, 2 Front, 1 Back

Fire Control: 3D

Space: 3-15/36/75

Atmosphere Range: 6-30/36/150km

Damage: 5D

2 x Ion Cannons

Scale: Capital

Fire Arc: Front

Fire Control: 3D

Space: 1-10/25/50

Atmosphere Range: 2-20/50/100km

Damage: 4D

3 x Tractor Beam Projectors

Scale: Capital

Fire Arc: 1 Front/Left, 1 Front/Right, 1 Back

Fire Control: 4D

Space: 1-5/15/30

Atmosphere Range: 2-10/30/60km

Damage: 3D

Description: The Gladiator was a vessel that belonged to a slaver organization The Crucible. Commanded by the captain Dace Golliard, in 3963 BBY it intercepted a mining ship Hot Prospect in the Koornacht Cluster.

Stats by FreddyB, Descriptive Text from WookieePedia.

Image copyright LucasArts.

Any complaints, writs for copyright abuse, etc should be addressed to the Webmaster [FreddyB](#).