

Vehicles D6 / Caterpillar All Terrain Co

Name: Caterpillar All Terrain Construction Excavator (AT-CE)

Type: Medium Walker

Scale: Walker

Length: 6.4 Meters long, 8.6 Meters Tall

Skill: Walker Operation; ATST

Crew: 2; Skeleton 1/+15

Cargo Capacity: 200 kilograms

Cover: Full

Maneuverability: 0D

Move: 30, 90 kmh

Body Strength: 3D

Weapons:

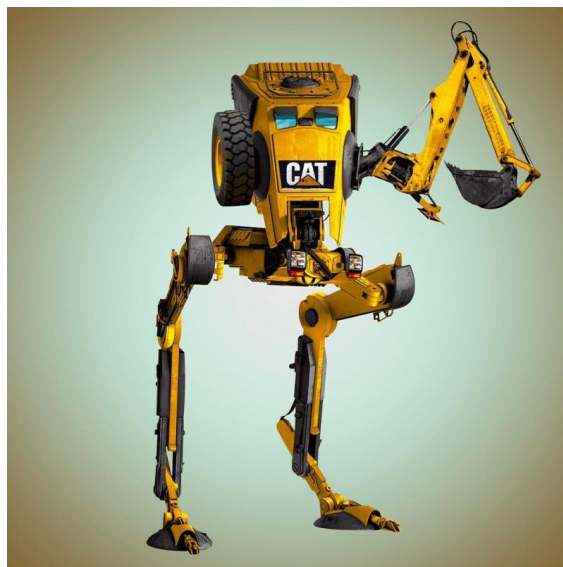
None:

Equipped With:

Excavator Arm (can do 2D Walker Scale Brawling Damage)

Spotlights

Spare Tire



Description: When the Empire issued a vague contract for “light utility walkers,” Caterpillar—best known for building things not meant for war—delivered something so boldly impractical, it defied logic, physics, and common sense: the AT-CE, or All Terrain Construction Excavator.

Marketed as a rugged field support vehicle, the AT-CE was really just a heavily modified scout walker outfitted for construction jobs nobody asked for in the middle of a galactic civil war.

Distinguishing Features:

- A single, fully-jointed excavator arm awkwardly mounted to the left side of the head. Ideal for digging, poking, or pretending it's doing something important.
- A lone spare tire bolted to the right side of the head. It serves absolutely no function. The walker doesn't have wheels. No further questions.
- Two high-powered industrial spotlights where the chin guns should be. Fantastic for lighting up worksites. Less fantastic when ambushed by literally anything with a blaster.

Painted in iconic Caterpillar Yellow, making it visible from orbit, easily mistaken for a mobile construction

hazard, and generally the last thing you'd want in a stealth mission.

Unarmed and visibly confused about its purpose, the AT-CE was mostly relegated to support roles, construction demos, and a brief stint as a mobile floodlight at an Imperial officer's birthday party.

Troopers nicknamed it "The Yellow Legs", and "The Thing That Trips Itself." It was quietly retired after an unfortunate incident involving mud, a hill, and a family of bemused Tauntauns.

Stats by FreddyB, Descriptive Text from WookieePedia.

Image copyright LucasArts.

Any complaints, writs for copyright abuse, etc should be addressed to the Webmaster [FreddyB](#).